

VE2P, VE4P

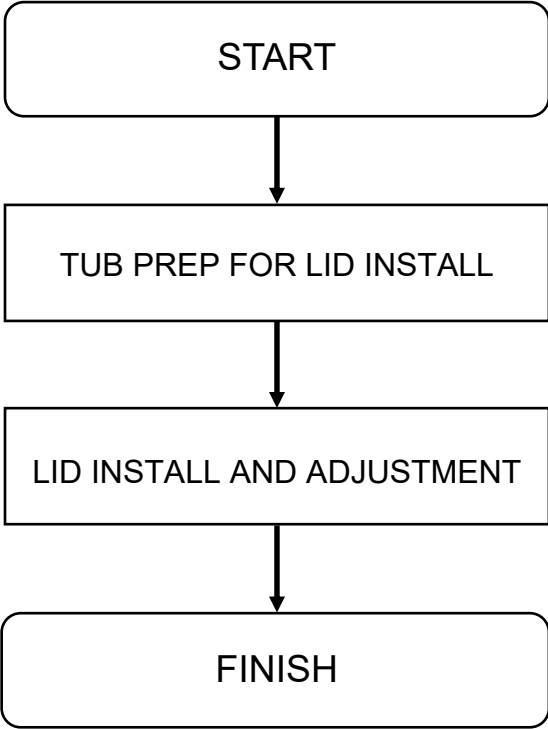
1 x Lid Front Hinge	1135	
8 x M8 Bolt		
8 x M8 Washer (3mm Thick)		
2 x M8 Ball Studs		
2 x M8 Washers		
15 x Screws		
2 x Gas Struts (220N) 700L		
2 x Front tub mount and pins	1136B	
2 x 500mm T Rubber mould		
1 x 1500 mm D Rubber mould		
8 x M8 Nuts		
2 x U Bolt		
2 x Striker Bracket	1190	
1 x Alcohol wipe		
1 x Instruction manual		
Fitting kit made by :		

Fitting Instructions Part Numbers VE2, VE4, VE5 Holden VE–VF Commodore 2006+

Check contents of kit before commencing fitment and report any discrepancies

IMPORTANT	<ul style="list-style-type: none"> • Do not stand/sit or rest heavy objects on Tonneau Cover • Humans or animals are not to be under the closed Tonneau at any given time • Securely lock tonneau Cover before operating vehicle • Tonneau Cover is not dust or water tight • Do not carry open volatile chemicals with Tonneau Cover installed • If contact with volatile chemicals occur, clean Tonneau with mild detergent and water solution 			
Care Instructions	<ul style="list-style-type: none"> • Read Instructions fully before commencing installation. • Clean Tonneau Cover with a mild detergent and water solution • Do not use abrasive cleaners or solvents • Refer to manufactures instructions applicable to power drill. • Protect Tub floor against scratches during installation process. 			
Maintenance	If lubrication of the locks or hinges is required use only Graphite Powder. DO NOT use any other lubricants or oils.			
Tools Required	<table style="width: 100%; border: none;"> <tr> <td style="vertical-align: top;"> <ul style="list-style-type: none"> • Pen / Marker • Centre Punch • Drill & Drill bits • Phillips head screwdriver • Caulking Gun • Silicon - Non Acetic </td> <td style="vertical-align: top;"> <ul style="list-style-type: none"> • Die Grinder & multi tool • Masking Tape • Scissors & Knife • Ruler • Spanner & Socket • Tape measure </td> <td style="vertical-align: top;"> <ul style="list-style-type: none"> • Soapy water solution • Allen Key set (Metric) </td> </tr> </table>	<ul style="list-style-type: none"> • Pen / Marker • Centre Punch • Drill & Drill bits • Phillips head screwdriver • Caulking Gun • Silicon - Non Acetic 	<ul style="list-style-type: none"> • Die Grinder & multi tool • Masking Tape • Scissors & Knife • Ruler • Spanner & Socket • Tape measure 	<ul style="list-style-type: none"> • Soapy water solution • Allen Key set (Metric)
<ul style="list-style-type: none"> • Pen / Marker • Centre Punch • Drill & Drill bits • Phillips head screwdriver • Caulking Gun • Silicon - Non Acetic 	<ul style="list-style-type: none"> • Die Grinder & multi tool • Masking Tape • Scissors & Knife • Ruler • Spanner & Socket • Tape measure 	<ul style="list-style-type: none"> • Soapy water solution • Allen Key set (Metric) 		

Installation Steps Flow Chart



CAUTION:

Over tightening fasteners attached to the Hard Tonneau cover may damage the threaded inserts. Please use recommended tightening torques where specified.

Recommended:

You should leave the protective plastic film on the lid, peel back the protective plastic film 100 mm from around all edges. Remove the remaining protective plastic film only at completion of installation.

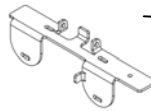
1. To fit Front Assembly Hinges (FBA)

First: Place Front Bar Assembly hinges onto rear window sill. Align the sides to the edge of the plastic capping. Using the front hinge as a template align the self drilling screws in the middle of the slots, (10 Places) and drill into the vehicle. **NOTE:** Do not tighten screws.

0.5Mtr Overhang of
Clean seal each side



Attach FBA
through these pre
drilled holes



Remove the screws and Front Bar hinges and vacuum any swarf and paint the holes with corrosion protection primer.

Re-Attach the FBA using self-drilling screws (10 supplied) through holes pre-drilled in the bar.

Attach clean seal provided from left edge of plastic capping to right towards the rear edge including over the hinges. Remove the orange backing tape from the clean seal and place along the inner top edge of the plastic capping.

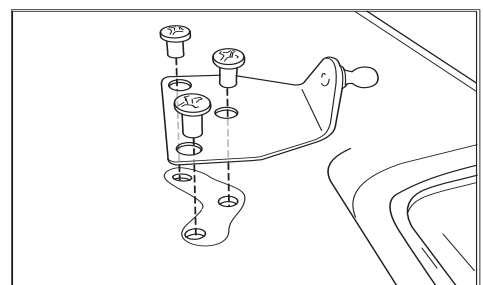
2. Remove existing bolt from middle Tie down bracket, replace with supplied Gas Strut Ball bolt. **Repeat** for the other side

3. Fit the shaft end of the gas strut onto the ball on the ball plate. A “**CLICK**” will be heard when the strut is seated correctly. Allow the other end of the strut to lay on the wheelhouse.
Repeat for the other side.

4. Remove the rear existing bolt on the tie down mount line up the lock catcher on top of the tie down mount and adjust if needed then Tighten with existing screws. **Repeat** for the other side.



5. Remove the gas strut screws from the hard Tonneau and install the gas strut brackets using the same screws. Tighten screws to specific torque.
Repeat for the other side



6. Fitting the Hinges:

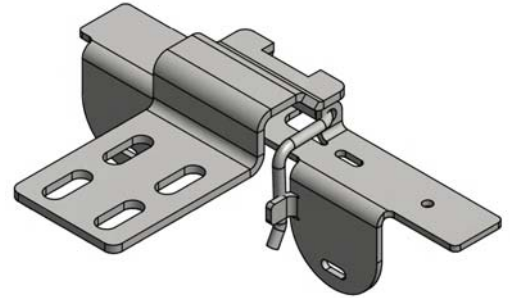
Place hinges in front bar slots and secure hinges with hinge pin (as shown below)

With the aid of an assistant place lid on the car with **Tailgate Down**.

NOTE: Take care not to damage Hard Tonneau or vehicle.

From inside the tub, place hinge support followed by the 8 washers and bolts (Supplied) into holes and hand tighten.

Check each side of the lid to make sure that there is the same clearance between the lid and the tub. Tighten the 8 bolts to the specified torque. With the assistance of one other person holding the lid open connect the gas struts to the lid gas strut mounts.



7. ADJUSTMENTS.

If adjustment is required gently open the Tonneau and disconnect the gas struts from the Tonneau by inserting a small screwdriver under the spring clip on the strut end and pries the clip outward without removing. Remove the strut.

For angular alignment correction; loosen the screw attaching each hinge to the Tonneau with a 5mm Allen Key. Open the Tailgate and have an assistant lie in the tray on their back with the Allen Key. Close the Tonneau and maneuver it into the correct position. When each side and rear is correctly aligned, have the assistant tighten the hinge screws to the specific torque. Open the Tonneau and reconnect the gas struts.

8. Close the Tonneau and check the locking action each side. Raise or lower the lock plates until slight pressure on the Tonneau is required for the locks to be operated. Torque screws to specification.

Paint care instructions:

Your new painted Hard Tonneau Cover has been covered with a plastic film to protect the paint from damage. It will require cleaning and possibly light polishing after the protective film has been removed. Use polish as per new paint on a new vehicle. Wash Hard Tonneau Cover using water and normal carwash detergent and polish with an automotive polish.

NOTE: Please ensure Lid is kept locked at all times when not being used, for both safety and longevity.

Having trouble? Call your Supplier.